

Forecasting Oil Spills in Extreme Oceanographic Environments

Ryan Gilchrist¹, Robert Hall¹, John Bacon², Jon Rees², Karen Heywood¹

1: University of East Anglia

2: Centre for Environmental, Fisheries and Aquaculture Science



Contents

1. Project motivation

2. What are 'extreme' oceanographic conditions?

3. Modelling the Ocean

4. What About the Oil?

Contents

1. Project motivation
- 2. What are 'extreme' oceanographic conditions?**
3. Modelling the Ocean
4. What About the Oil?

Contents

1. Project motivation
2. What are 'extreme' oceanographic conditions?
- 3. Modelling the Ocean**
4. What About the Oil?

Contents

1. Project motivation
2. What are 'extreme' oceanographic conditions?
3. Modelling the Ocean
4. **What About the Oil?**

Project motivation



Deepwater Horizon spilled...

Deepwater Horizon spilled...

780,000 cubic metres of oil...

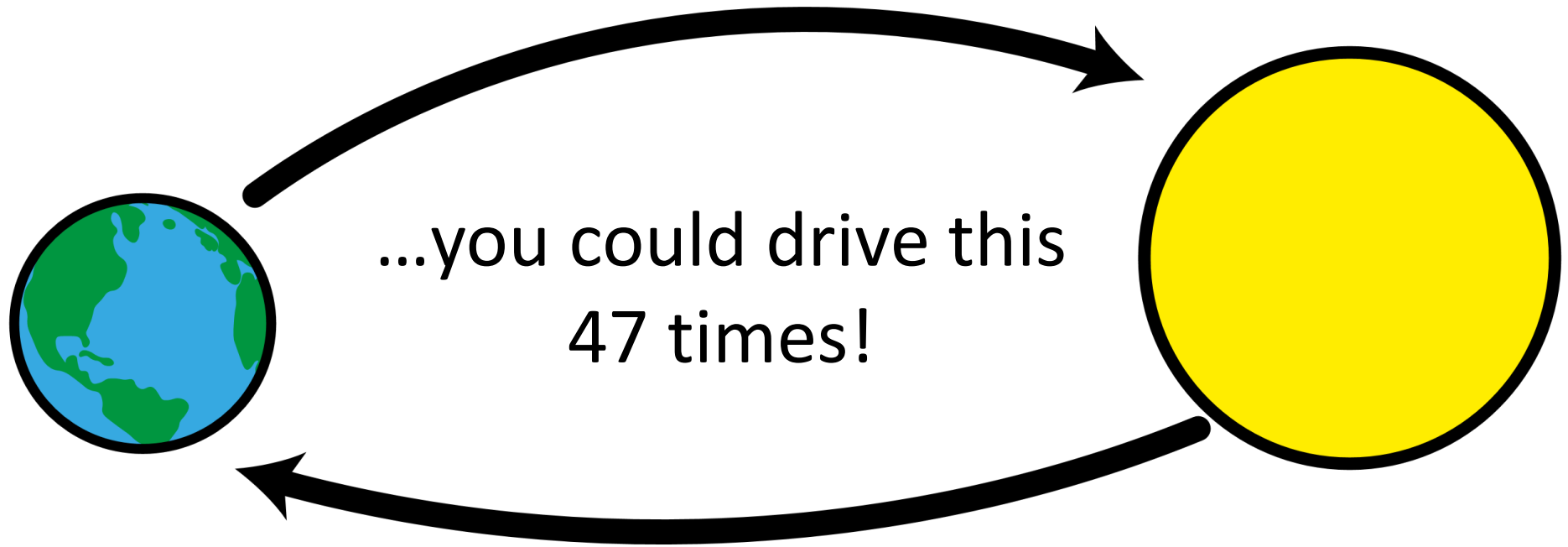
Deepwater Horizon spilled...

... or 4.9 million barrels...

Deepwater Horizon spilled...

...or 206 million gallons...

...with that amount in petrol...



- The Faroe-Shetland Channel is a primary UK Location for future oil exploration
- Can we reliably forecast spills in this area?

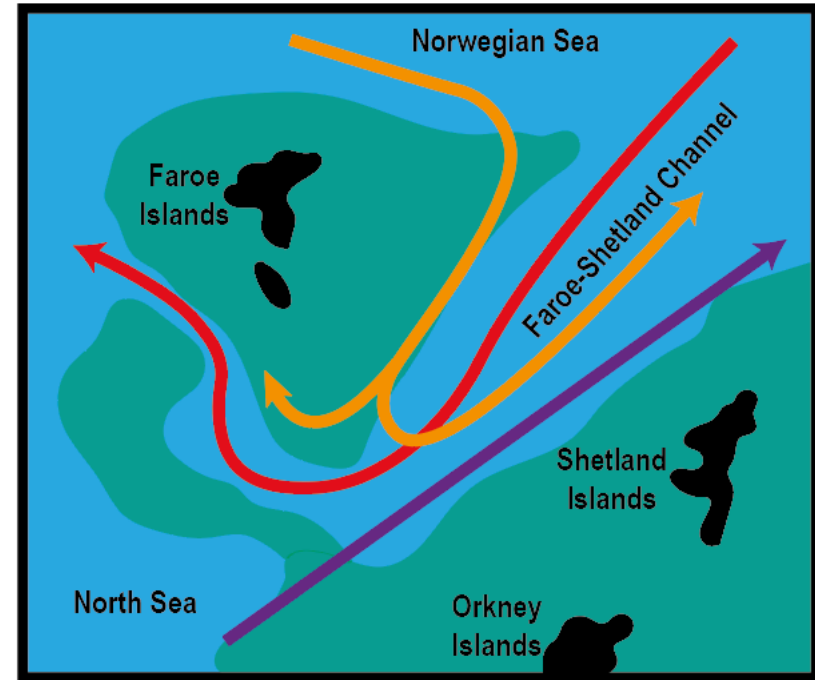


'Extreme' ... really?

Faroe-Shetland Channel: Physics

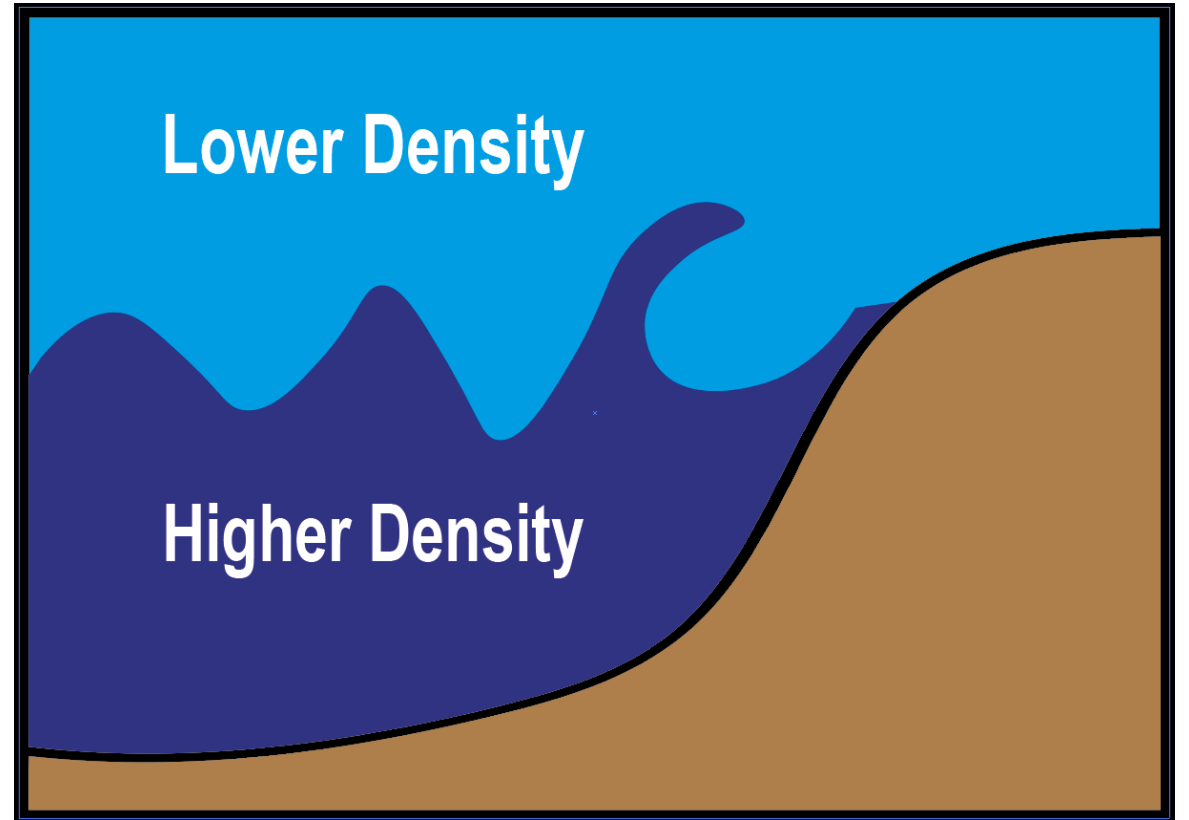
Faroe-Shetland Channel: Physics

- **Complex Circulation**



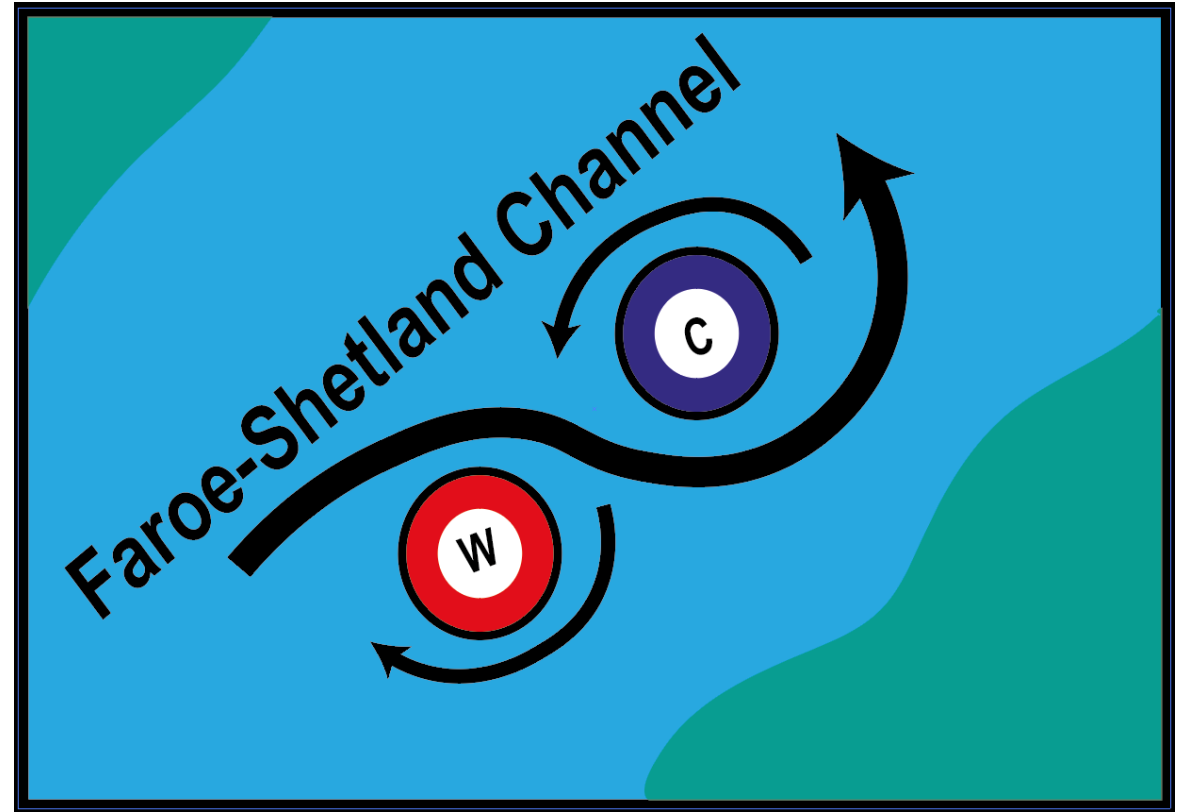
Faroe-Shetland Channel: Physics

- Complex Circulation
- **Internal wave breaking**



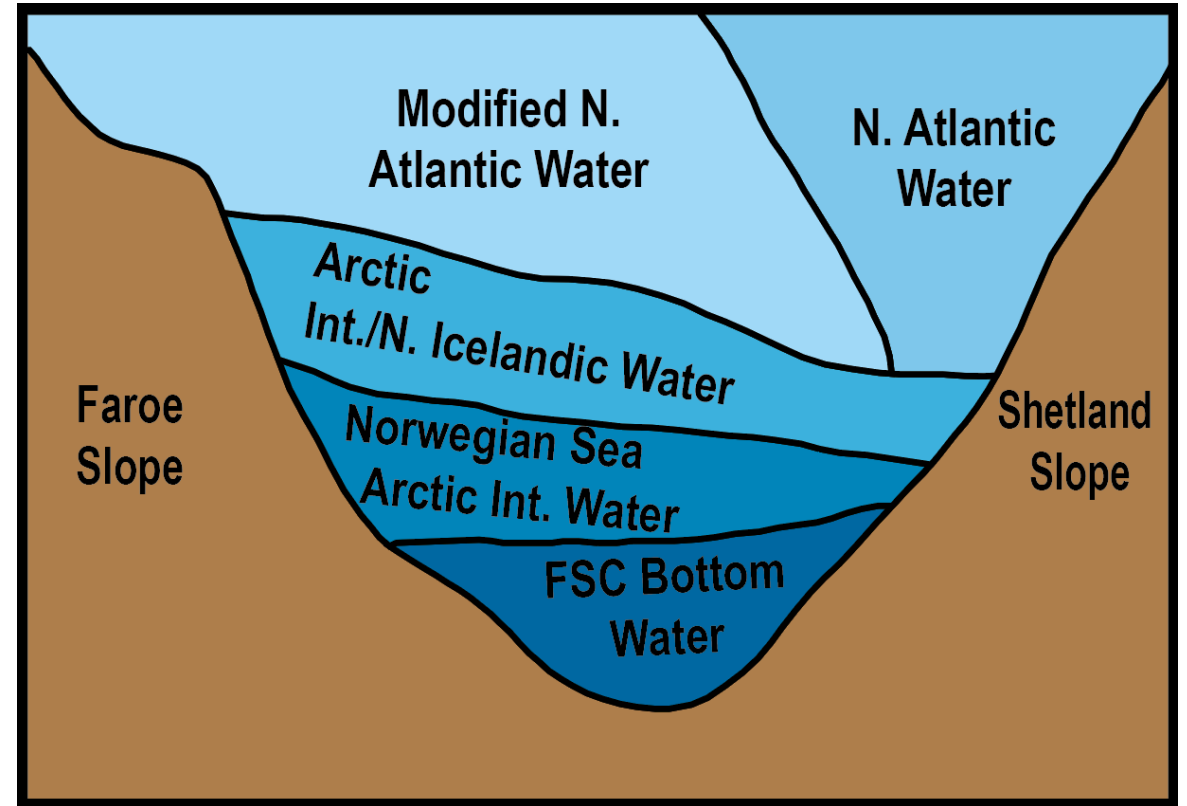
Faroe-Shetland Channel: Physics

- Complex Circulation
- Internal wave breaking
- **Eddies, meanders...**



Faroe-Shetland Channel: Physics

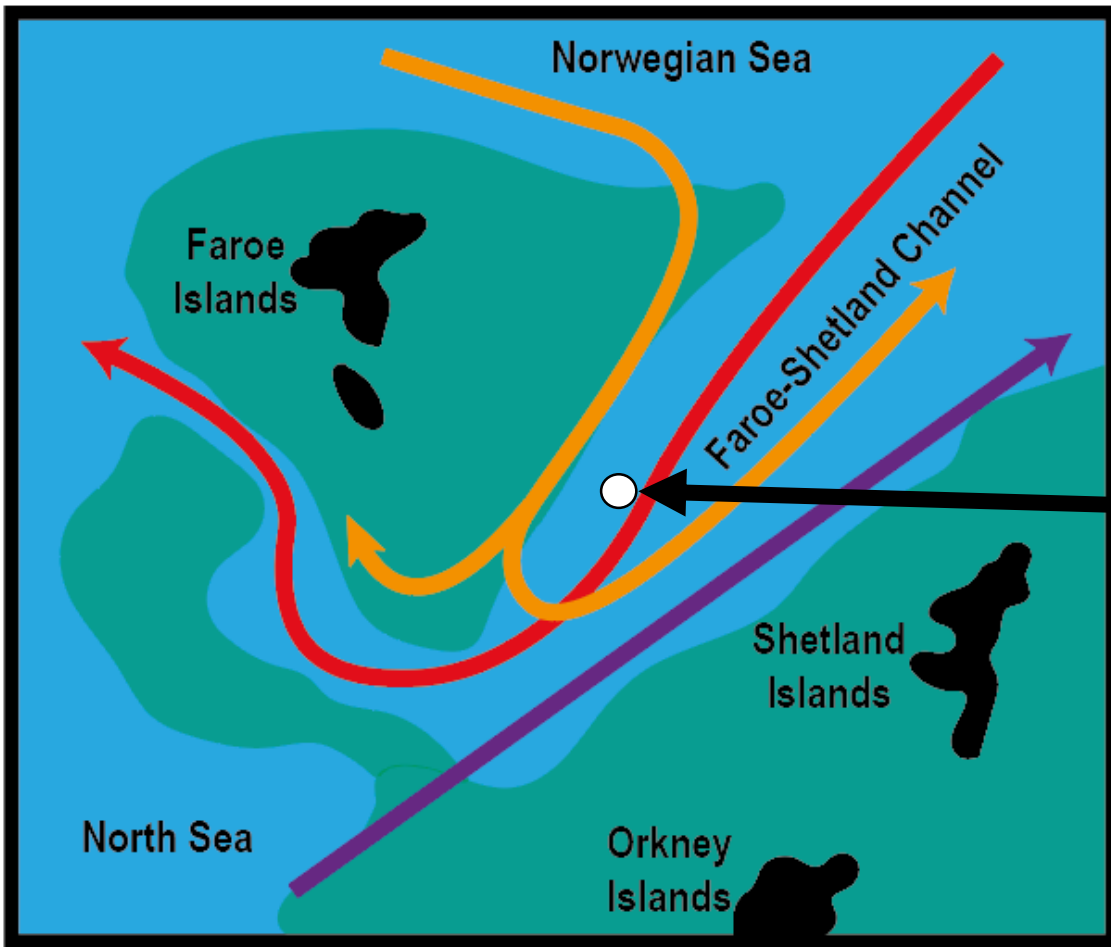
- Complex Circulation
- Internal wave breaking
- Eddies, meanders...
- **Strong stratification**



Faroe-Shetland Channel: Physics

- Complex Circulation
- Internal wave breaking
- Eddies, meanders...
- Strong stratification
- **Stormy weather**

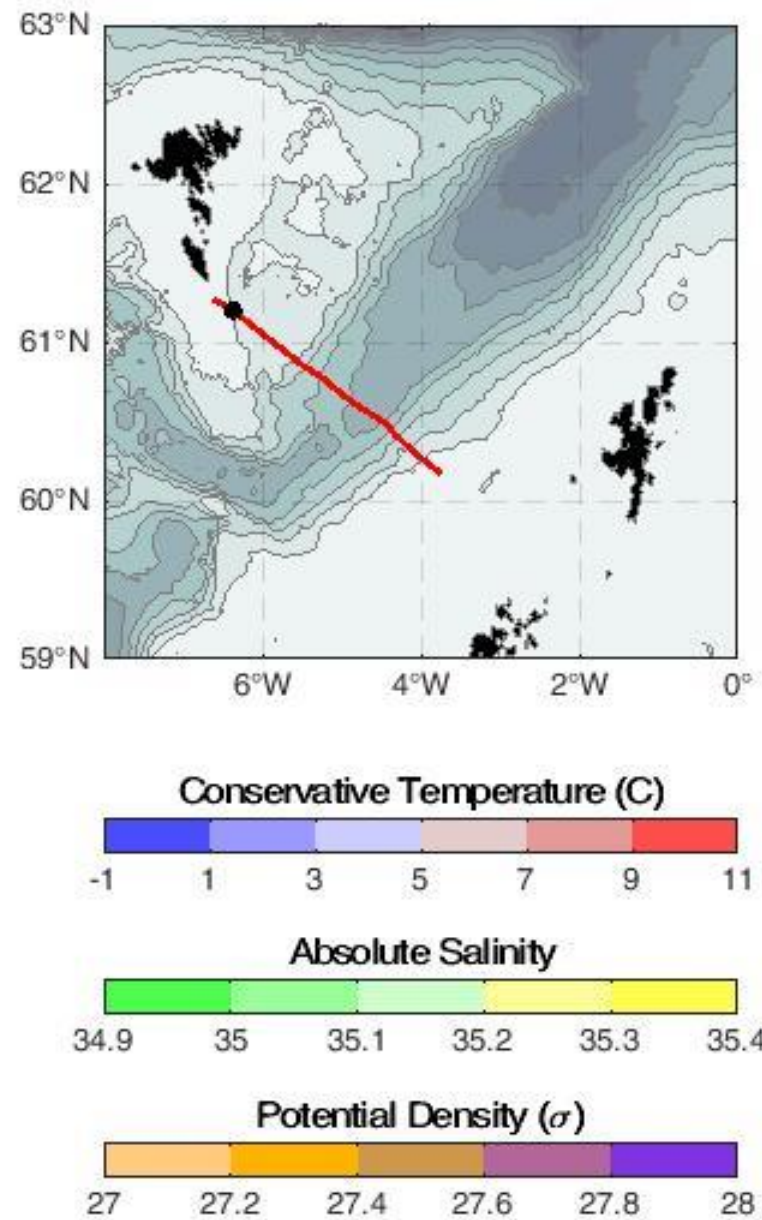
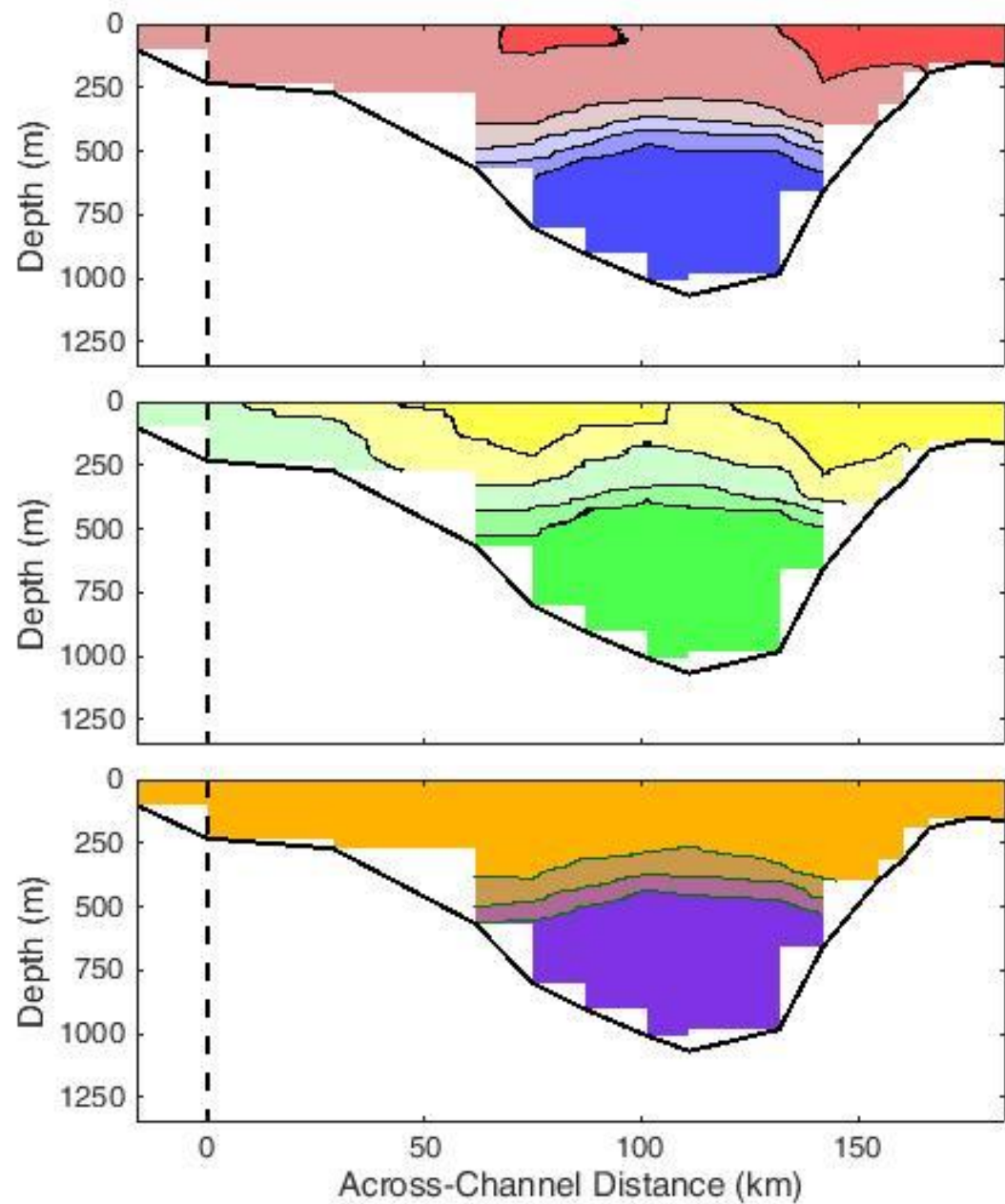


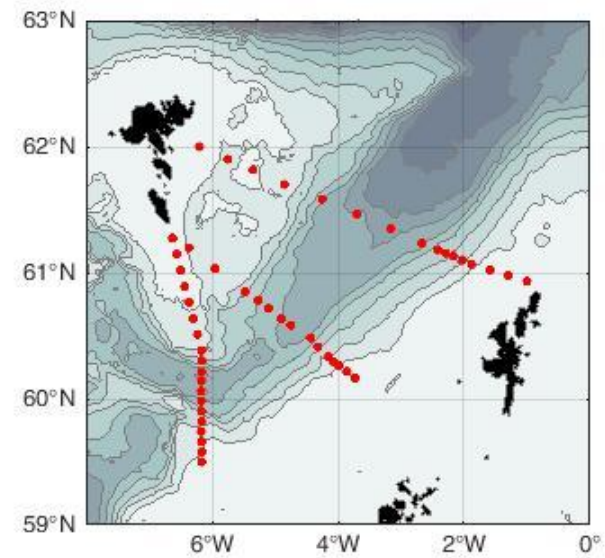
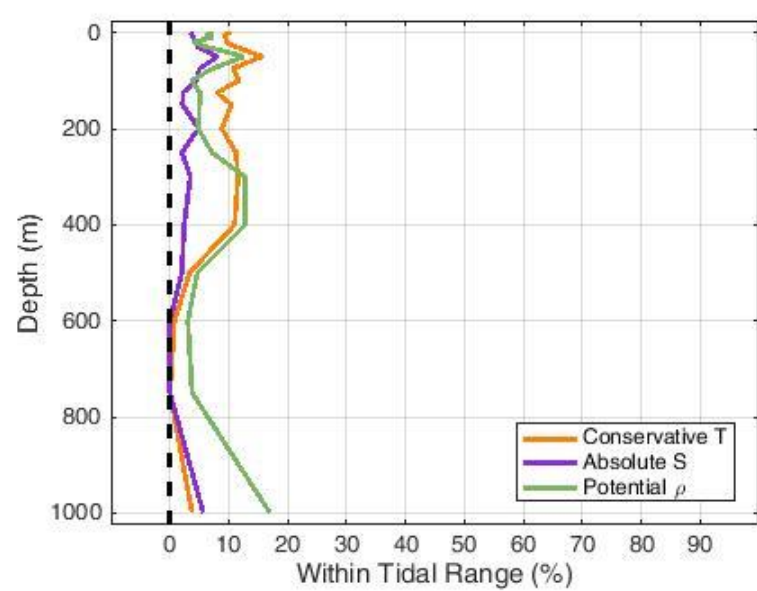
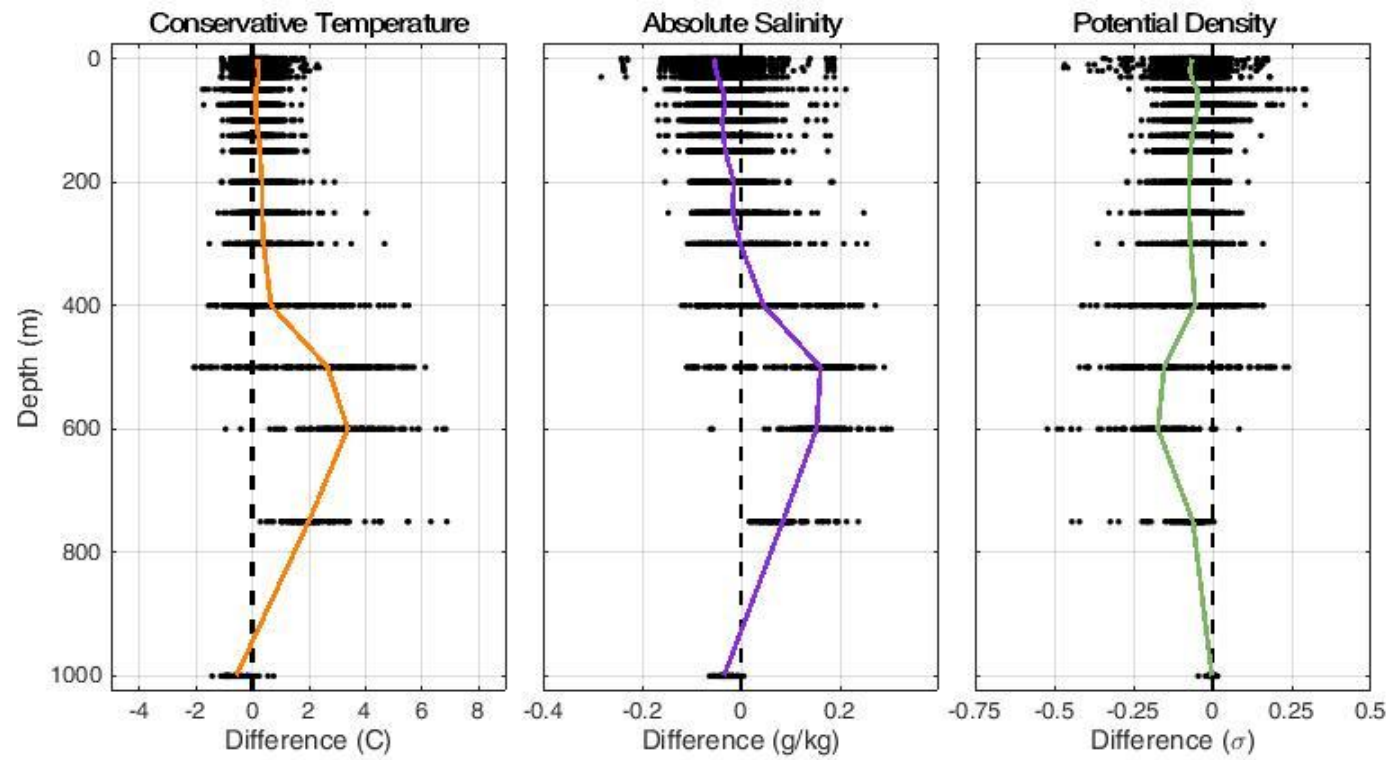


What if a spill happened here?

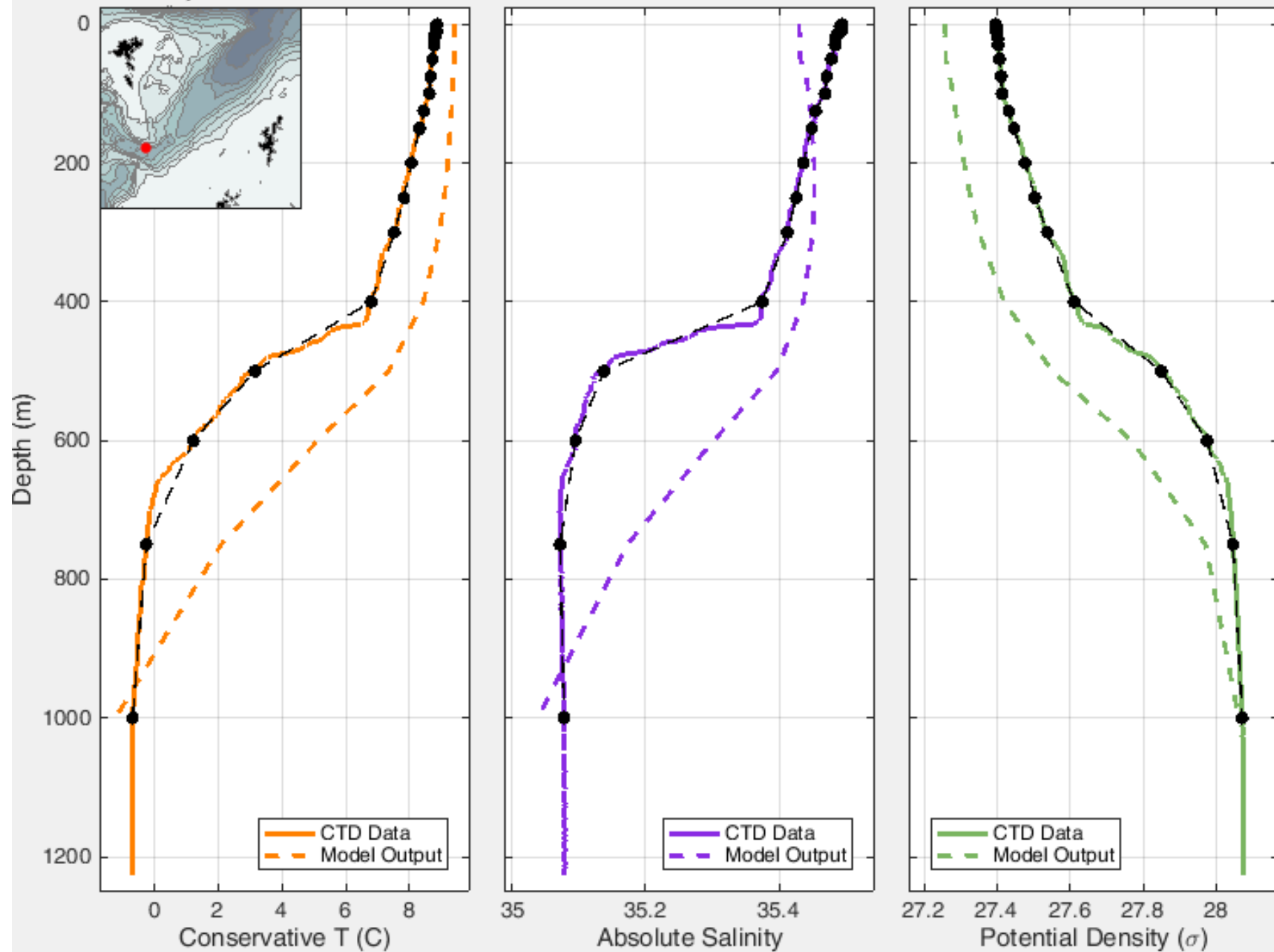


Modelling the Ocean

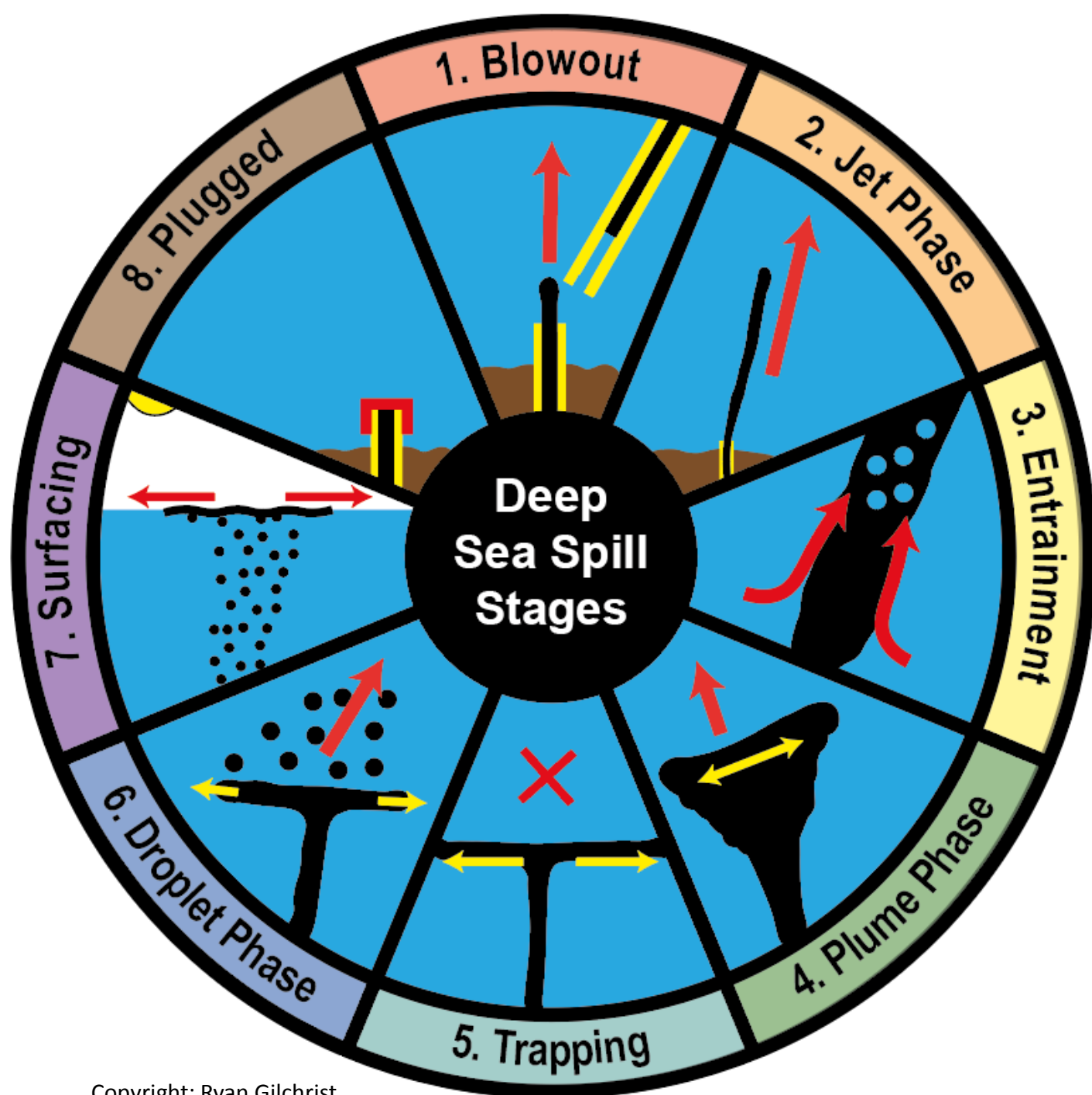


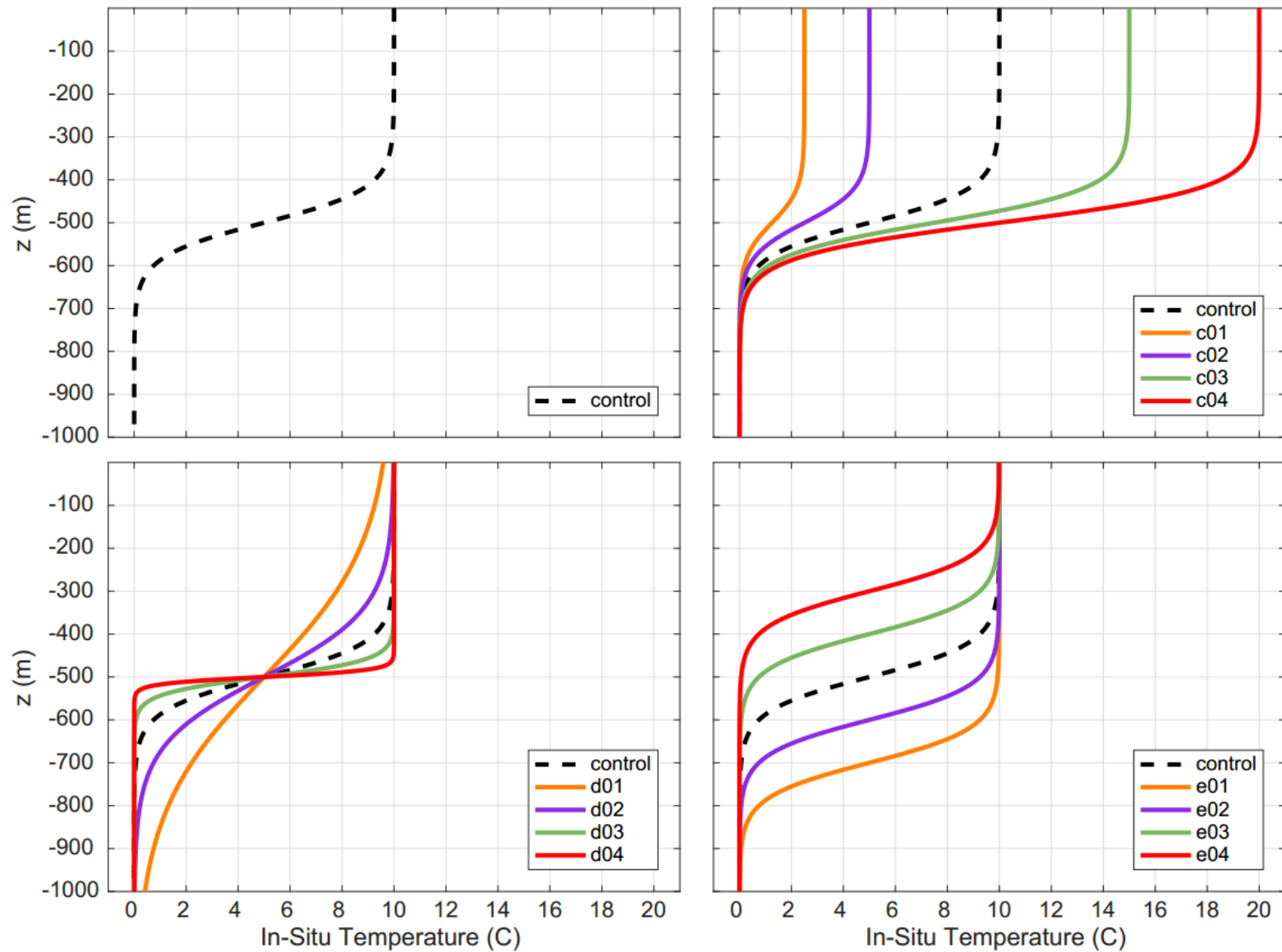


FCW, 5/2013

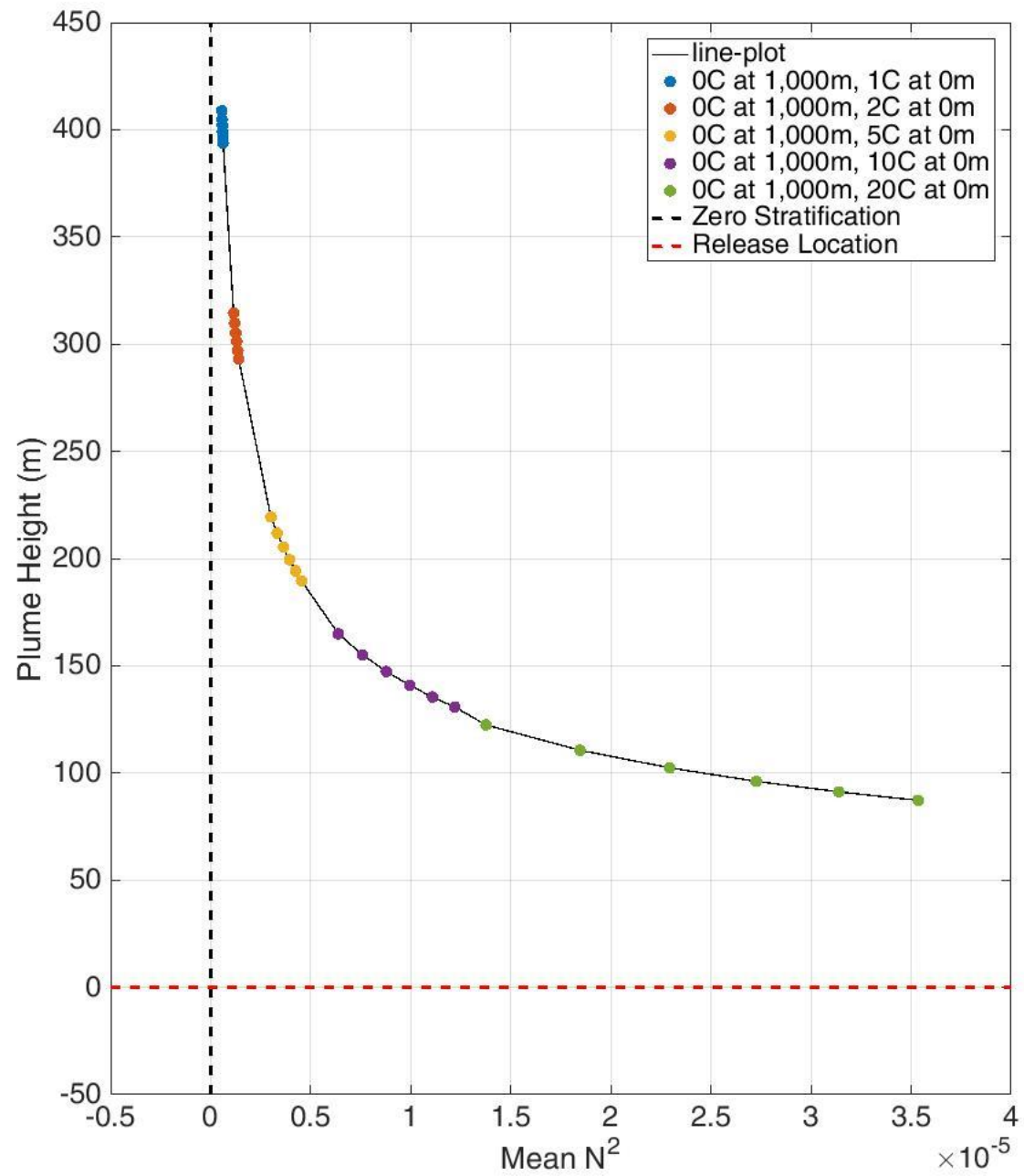


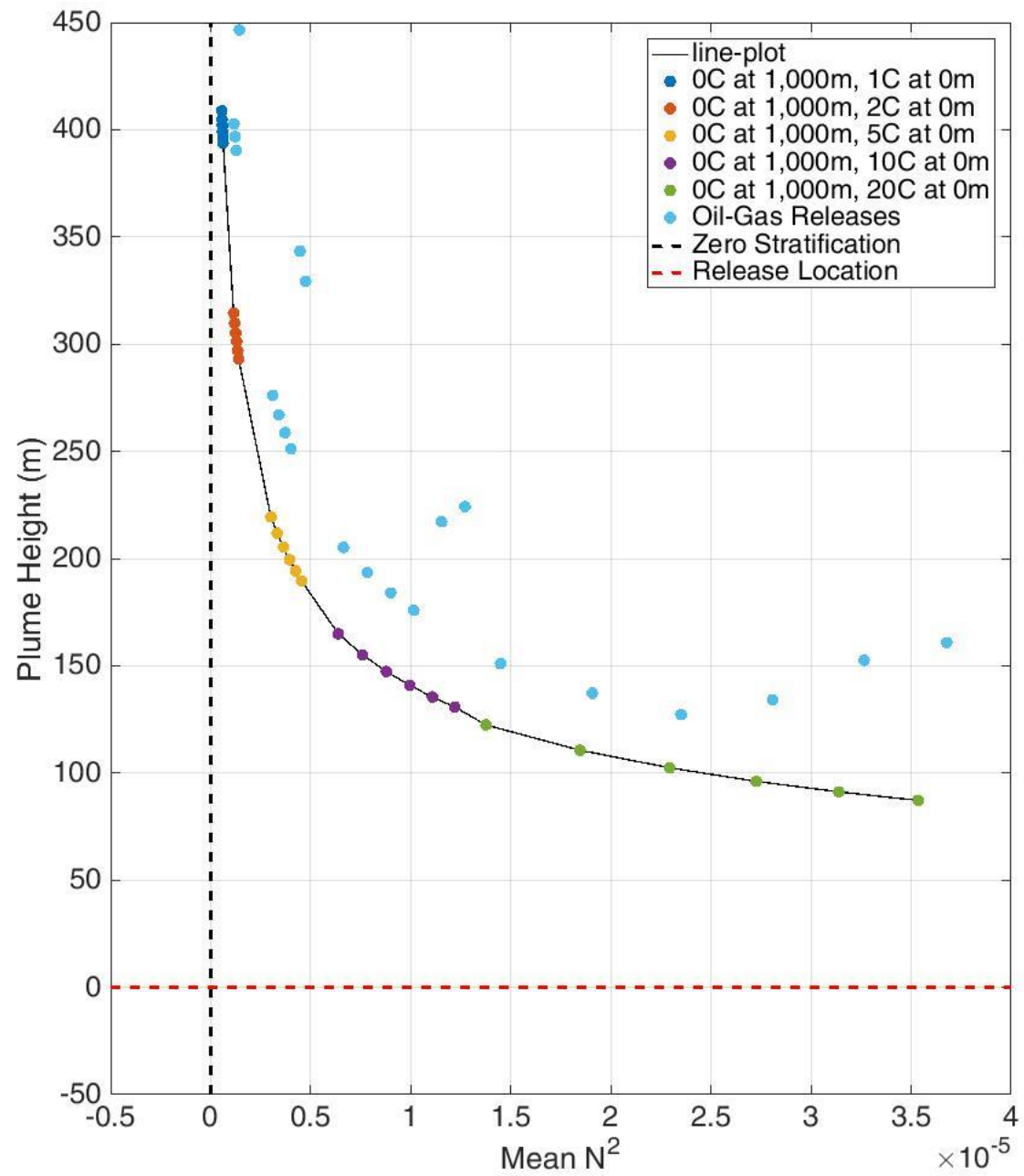
What About the Oil?



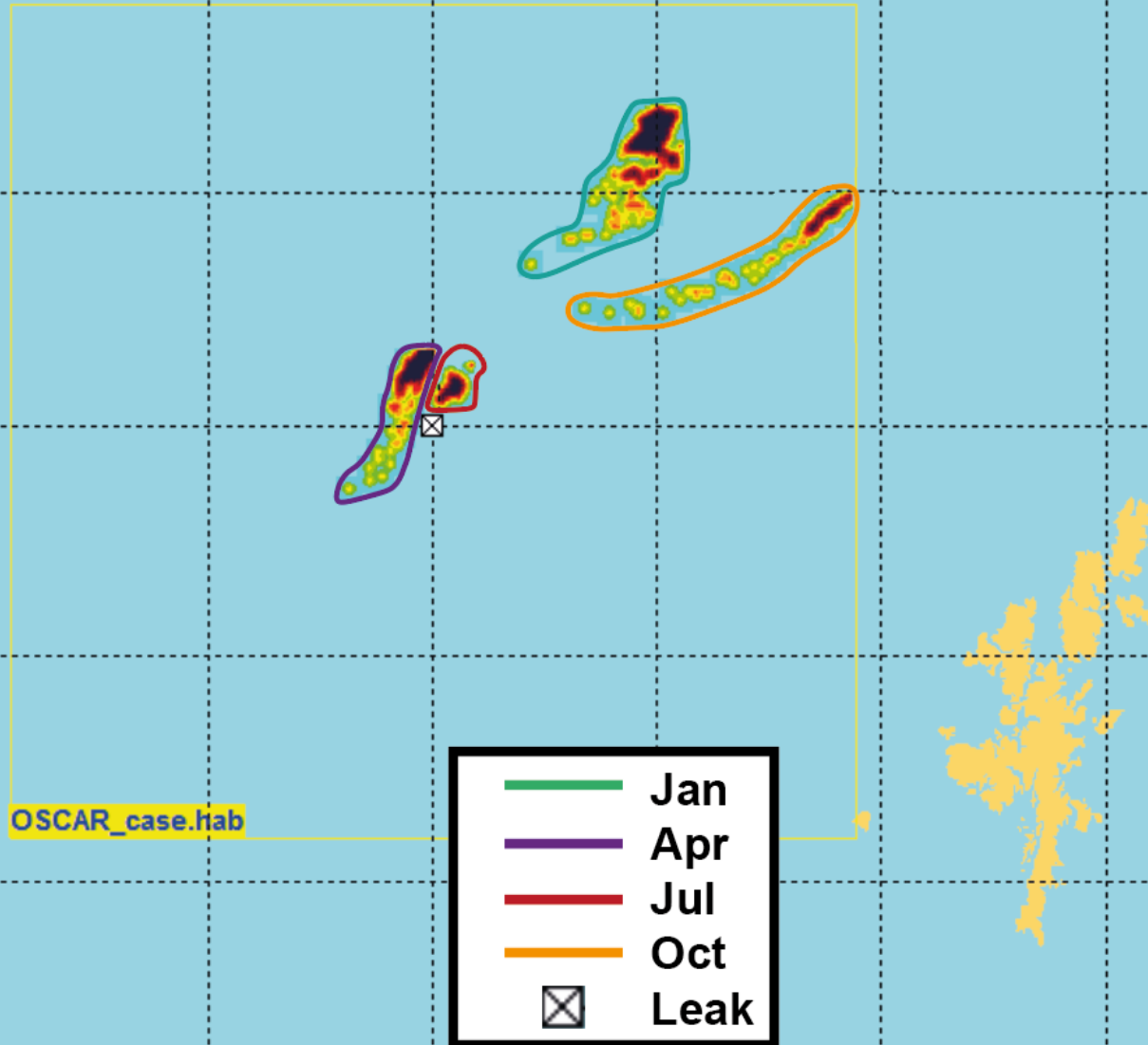


... and no stratification/linear temperature gradients





Seasonal Variation

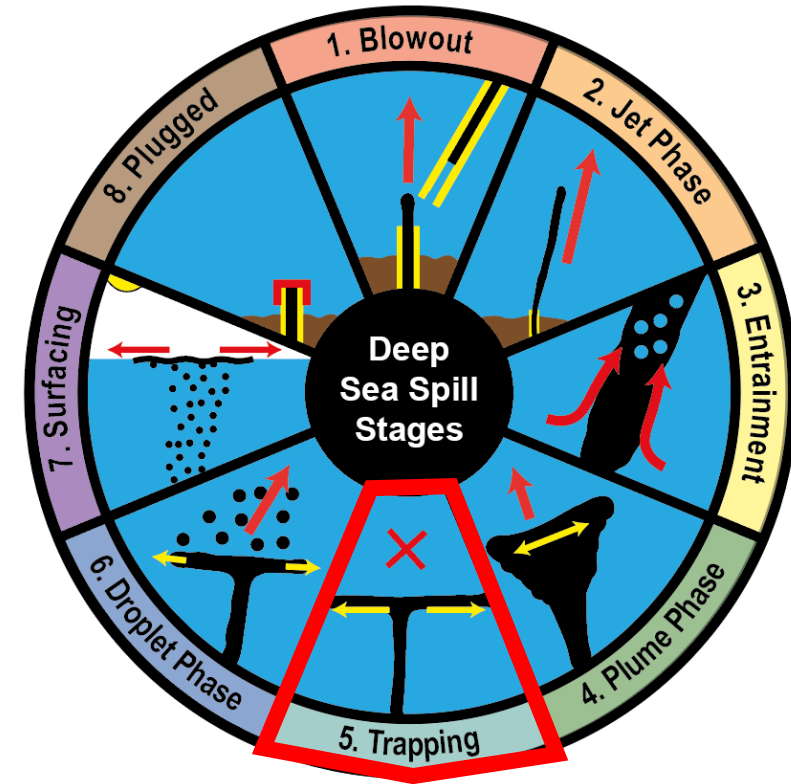


Location of oil
five days after
a release

Research Questions



What influence does stratification have on the depth in which pollutant trapping occurs?

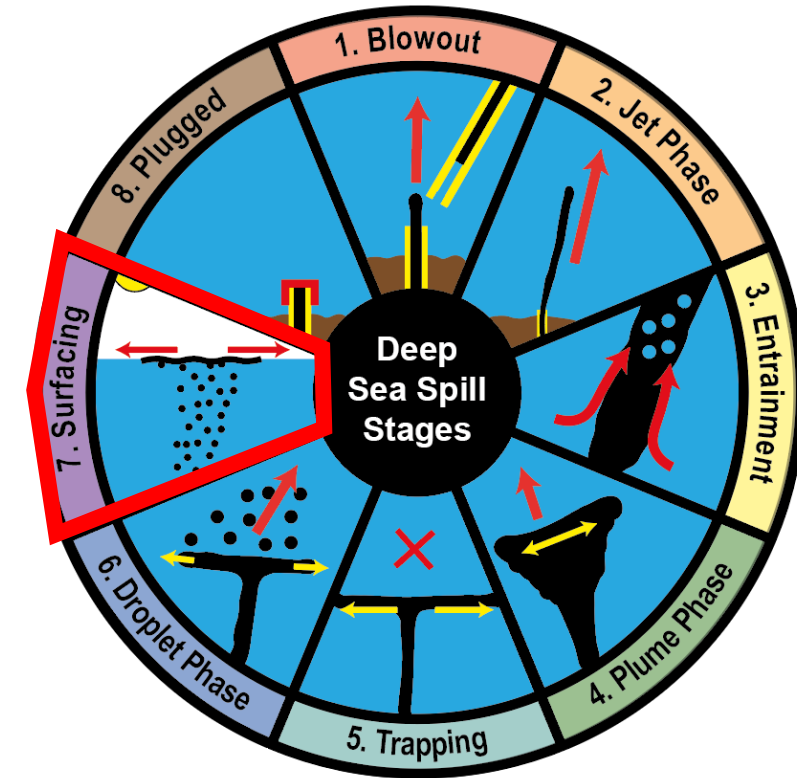


Research Questions



What influence does stratification have on the depth in which pollutant trapping occurs?

How does the complex circulation within the channel influence oil trajectory and fate?



Research Questions



What influence does stratification have on the depth in which pollutant trapping occurs?

How does the complex circulation within the channel influence oil trajectory and fate?



Do mesoscale eddies enhance or inhibit water entrainment and oil dispersion?

