



## Common Operating Picture

Key for Incident Preparedness & Response – minimising harm to People, Environment, Assets and Reputation.

**Dawn Gibson**

Senior Response Specialist, Oil Spill Expertise Centre

# Definitions & cautionary note

The companies in which Royal Dutch Shell plc directly and indirectly owns investments are separate legal entities. In this presentation “Shell”, “Shell group” and “Royal Dutch Shell” are sometimes used for convenience where references are made to Royal Dutch Shell plc and its subsidiaries in general. Likewise, the words “we”, “us” and “our” are also used to refer to subsidiaries in general or to those who work for them. These expressions are also used where no useful purpose is served by identifying the particular company or companies. “Subsidiaries”, “Shell subsidiaries” and “Shell companies” as used in this presentation refer to companies over which Royal Dutch Shell plc either directly or indirectly has control. Entities and unincorporated arrangements over which Shell has joint control are generally referred to as “joint ventures” and “joint operations” respectively. Entities over which Shell has significant influence but neither control nor joint control are referred to as “associates”. The term “Shell interest” is used for convenience to indicate the direct and/or indirect ownership interest held by Shell in a venture, partnership or company, after exclusion of all third-party interest.

This presentation contains forward-looking statements concerning the financial condition, results of operations and businesses of Royal Dutch Shell. All statements other than statements of historical fact are, or may be deemed to be, forward-looking statements. Forward-looking statements are statements of future expectations that are based on management’s current expectations and assumptions and involve known and unknown risks and uncertainties that could cause actual results, performance or events to differ materially from those expressed or implied in these statements. Forward-looking statements include, among other things, statements concerning the potential exposure of Royal Dutch Shell to market risks and statements expressing management’s expectations, beliefs, estimates, forecasts, projections and assumptions. These forward-looking statements are identified by their use of terms and phrases such as “anticipate”, “believe”, “could”, “estimate”, “expect”, “goals”, “intend”, “may”, “objectives”, “outlook”, “plan”, “probably”, “project”, “risks”, “schedule”, “seek”, “should”, “target”, “will” and similar terms and phrases. There are a number of factors that could affect the future operations of Royal Dutch Shell and could cause those results to differ materially from those expressed in the forward-looking statements included in this presentation, including (without limitation): (a) price fluctuations in crude oil and natural gas; (b) changes in demand for Shell’s products; (c) currency fluctuations; (d) drilling and production results; (e) reserves estimates; (f) loss of market share and industry competition; (g) environmental and physical risks; (h) risks associated with the identification of suitable potential acquisition properties and targets, and successful negotiation and completion of such transactions; (i) the risk of doing business in developing countries and countries subject to international sanctions; (j) legislative, fiscal and regulatory developments including regulatory measures addressing climate change; (k) economic and financial market conditions in various countries and regions; (l) political risks, including the risks of expropriation and renegotiation of the terms of contracts with governmental entities, delays or advancements in the approval of projects and delays in the reimbursement for shared costs; and (m) changes in trading conditions. No assurance is provided that future dividend payments will match or exceed previous dividend payments. All forward-looking statements contained in this presentation are expressly qualified in their entirety by the cautionary statements contained or referred to in this section. Readers should not place undue reliance on forward-looking statements. Additional risk factors that may affect future results are contained in Royal Dutch Shell’s Form 20-F for the year ended December 31, 2016 (available at [www.shell.com/investor](http://www.shell.com/investor) and [www.sec.gov](http://www.sec.gov)). These risk factors also expressly qualify all forward-looking statements contained in this presentation and should be considered by the reader. Each forward-looking statement speaks only as of the date of this presentation, 28<sup>th</sup> September 2017. Neither Royal Dutch Shell plc nor any of its subsidiaries undertake any obligation to publicly update or revise any forward-looking statement as a result of new information, future events or other information. In light of these risks, results could differ materially from those stated, implied or inferred from the forward-looking statements contained in this presentation.

We may have used certain terms, such as resources, in this presentation that United States Securities and Exchange Commission (SEC) strictly prohibits us from including in our filings with the SEC. U.S. investors are urged to consider closely the disclosure in our Form 20-F, File No 1-32575, available on the SEC website [www.sec.gov](http://www.sec.gov). You can also obtain this form from the SEC by calling 1-800-SEC-0330.

# Genesis of the Common Operating Picture

- The Deepwater Horizon incident response required an unprecedented need for real-time information.
- The following barriers were highlighted during the incident:
  - *Lack of agreement on what data was needed.*
  - *Enormous geographic area of interest.*
  - *Limitations on ability to relay real-time data across the response organisation.*
  - *Incompatibility of different computing standards.*
- These barriers drove establishing the Common Operating Picture.



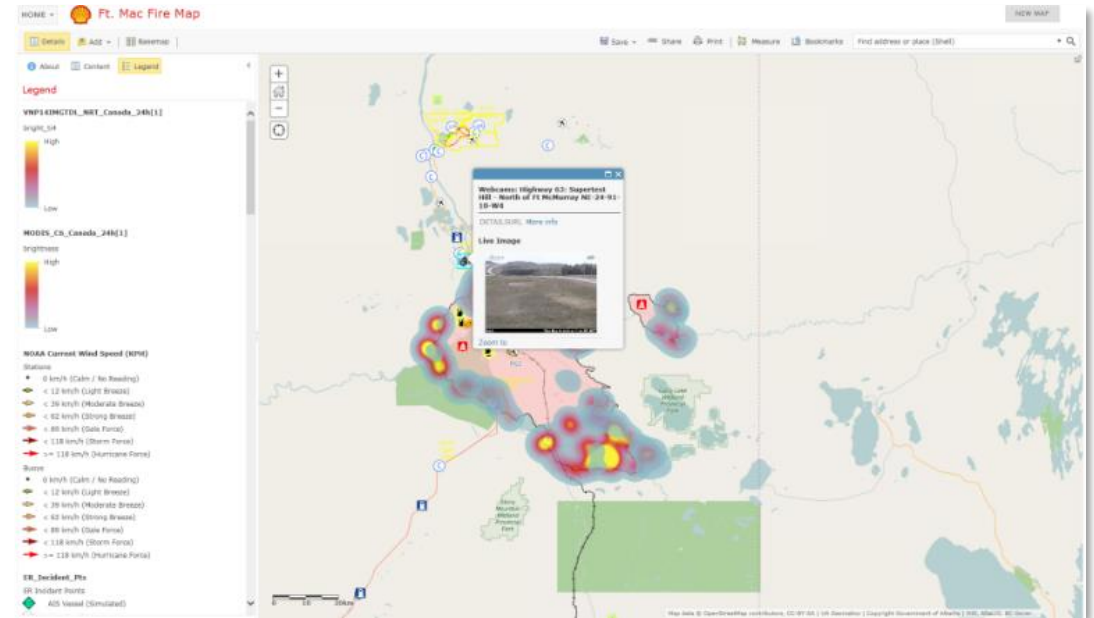
# Adopting the Common Operating Picture at Shell

## ■ Project Goals:

- Establish a global COP capability for any incident type, focusing on **Data, Technology, People** and **Process**.
- Allow Shell to deploy the COP to any incident, anywhere globally.
- Securely provide stakeholders (responders, regulators, partners, public) with real-time information on an incident response.
- Direct link to Incident Command System (ICS) methodologies.

## ■ Project Benefits:

- Driving Industry standards on the COP.
- Global capability and expertise to react to any incident.
- Provide access to key incident response data.
- Demonstrable benefit during exercises and real world incidents.



*The Common Operating Picture providing situational awareness for Fort McMurray Wildfires, Canada, 2016*

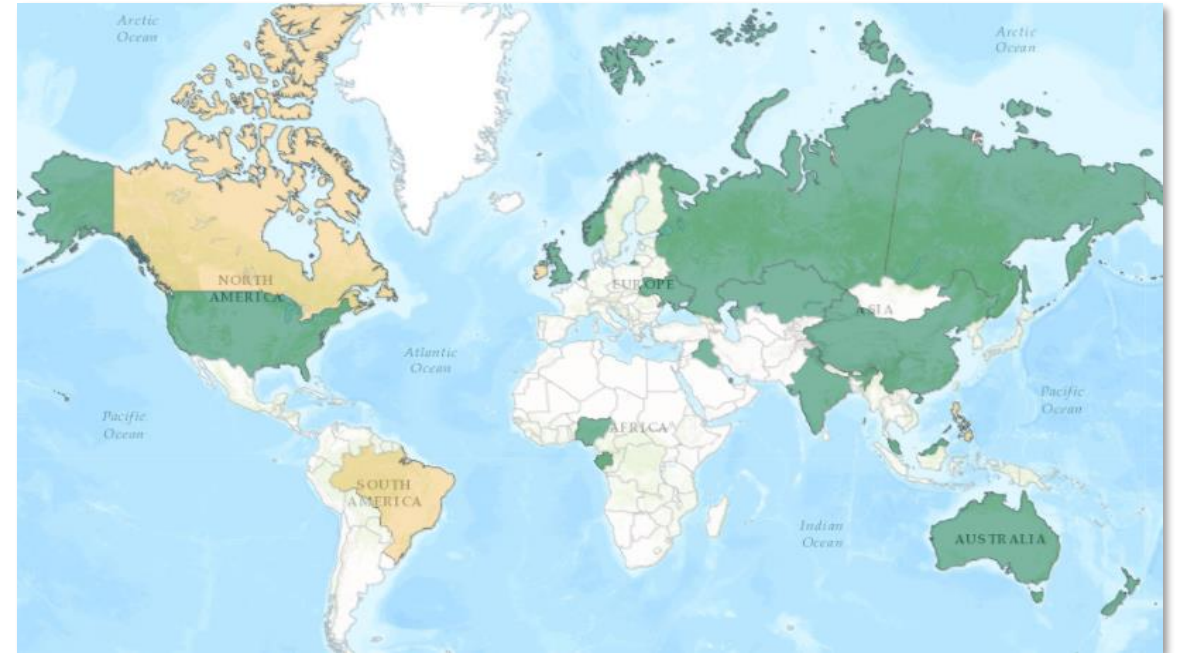
**"Accurate, timely, and geo-referenced information is vital to operational and strategic decision-making."**

*OGC IOGP/IIPECA Recommended Practice for a Common Operating Picture for Oil Spill Response*

# Common Operating Picture – People & Process

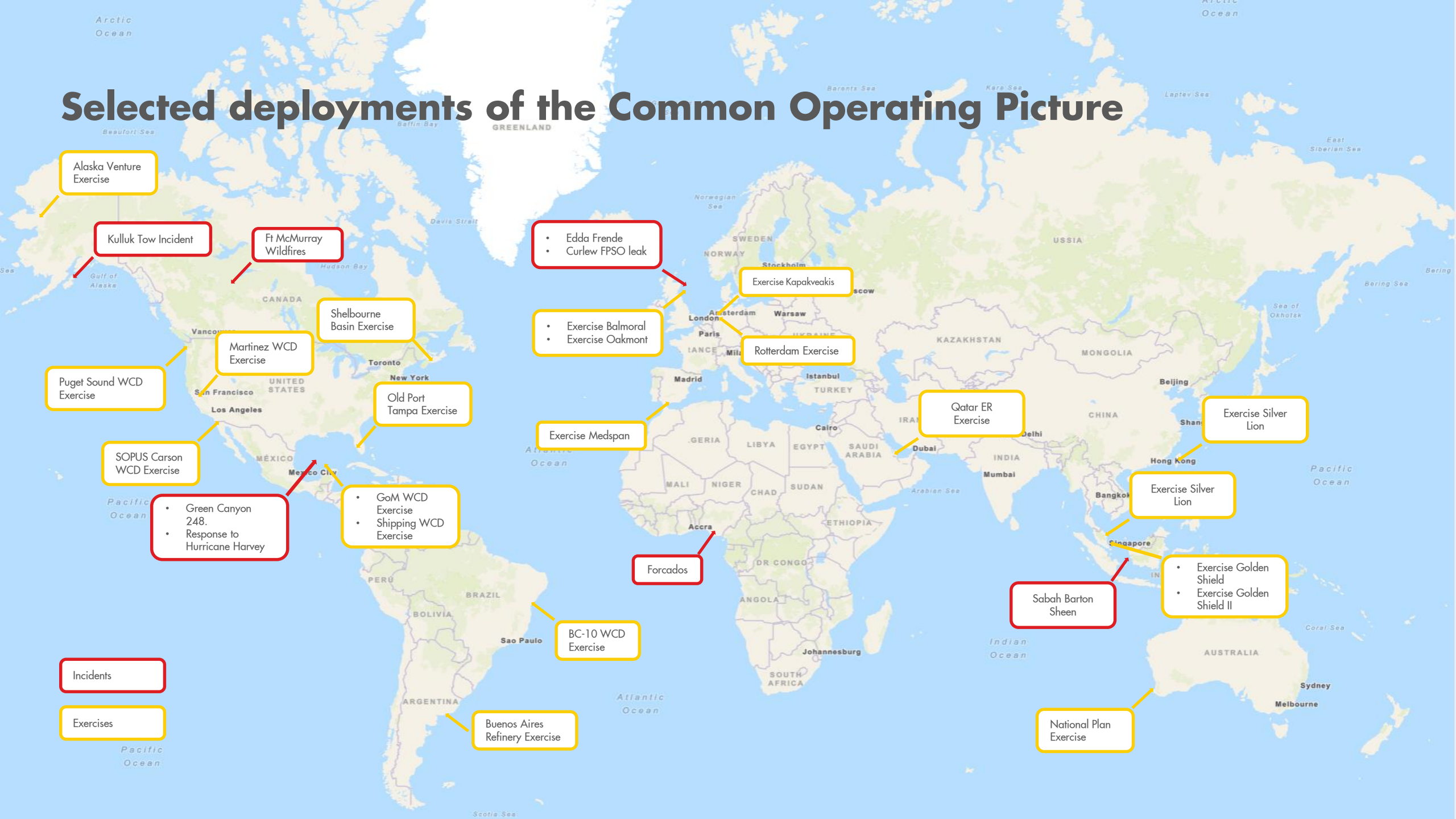
Our COP aspirations:

- **Global** coverage both **onshore** and **offshore**.
- COP Focal Points in **all** Shell locations.
- Training through ER exercises – **continuous improvement** via exercises.
- **Directly aligned** with the Shell Global Response Support Network (GRSN).



- Directly Supported
- Supported Remotely

# Selected deployments of the Common Operating Picture



## Next Steps - Common Operating Picture 2.0

- **Global Mobile Asset Tracking System** to provide **real-time** locations of responding vessels, aircraft, vehicles.
- Enhanced **mobile capabilities** to provide responders with simple mobile mapping tools to communicate field observations to the COP.
- **3D** mapping of global downstream assets to provide high detailed modelling of locations.
- **Standardised**, global, ER data model to ensure preparedness before, during and post incident.

