

After 'Torrey Canyon'

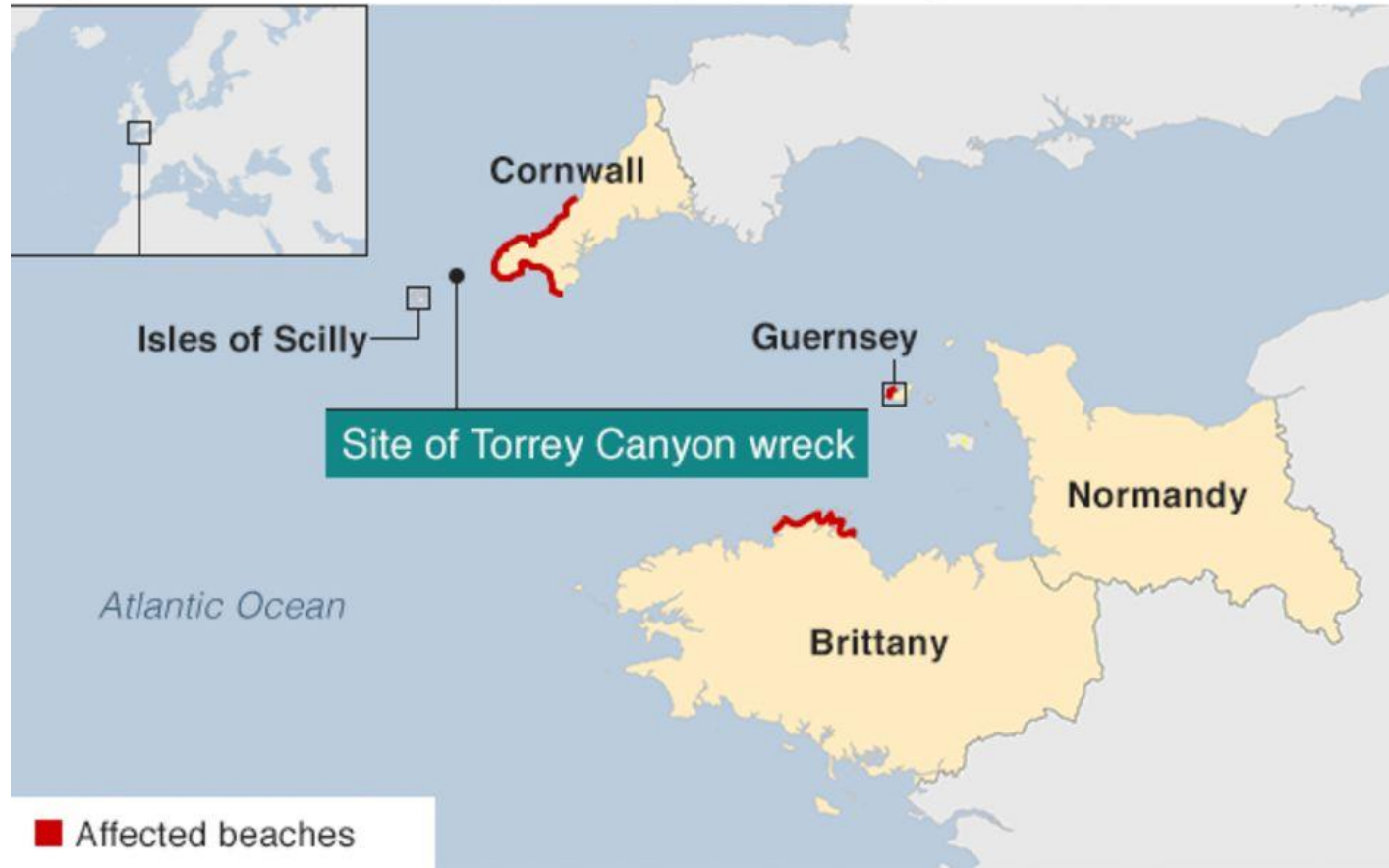
- Richard Pearce

Time line, Spring 1967

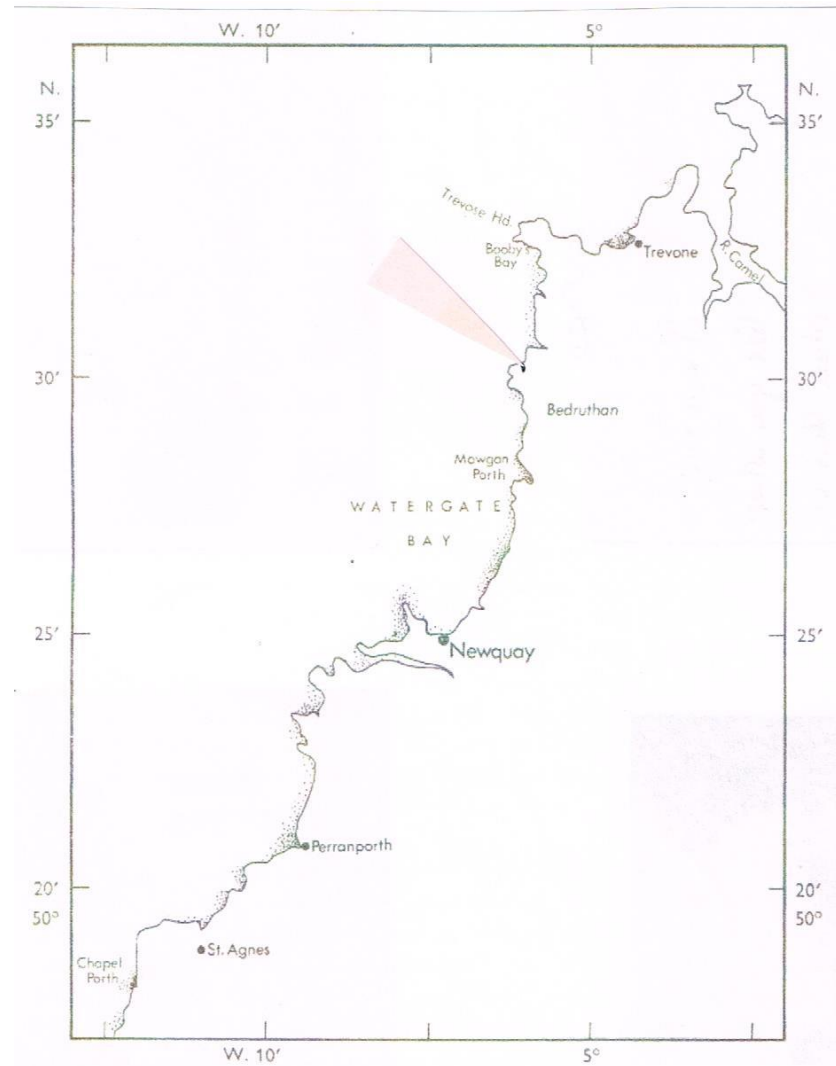


Eventual distribution of oil

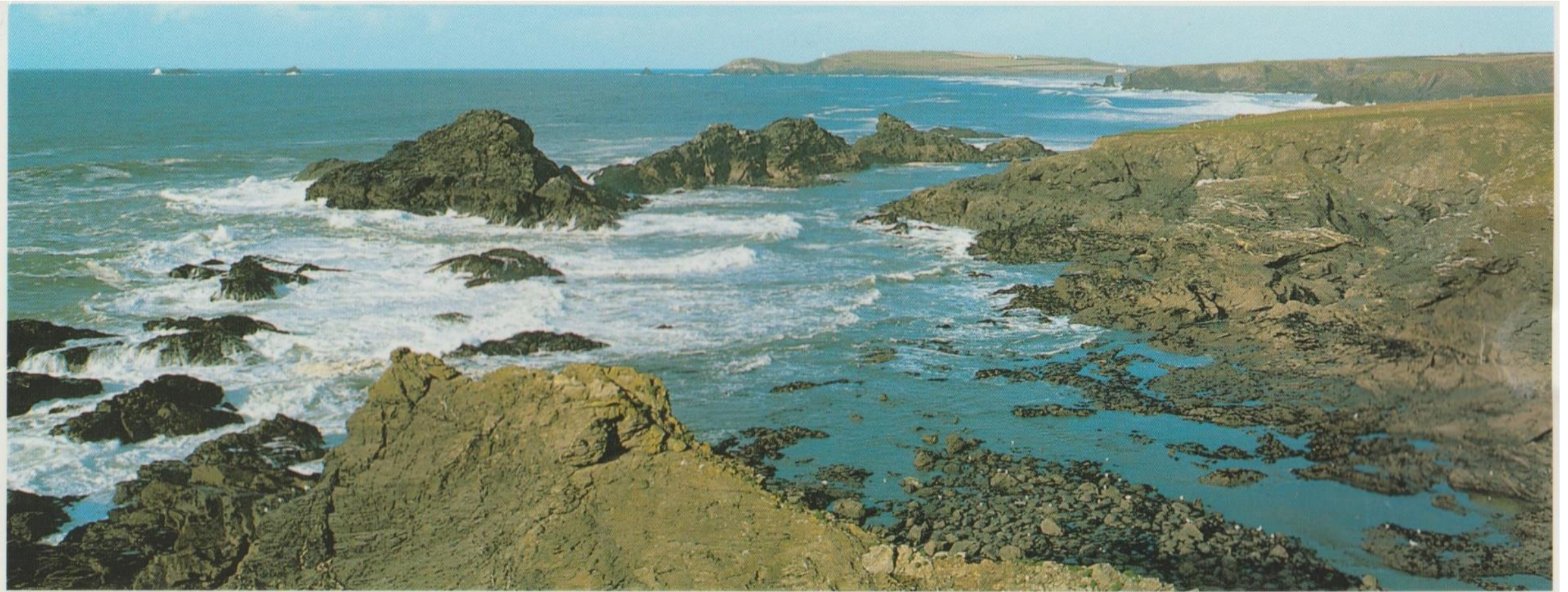
Spread of Torrey Canyon oil spill



Location of Porthmear



Porthmear, St Eval, Cornwall



Location of quadrats





DATE	1 Hi vert	2 Hi pool	3 Hi mid	5 Lo mid	4 Lo pool	6 Lo vert
Water		✓				
Enteromorpha		✓				
Ulva		✓				
Fucus		✓				
Rhodochorton		✓				
Laurencia		✓				
Corallina		✓				
Lithophilum		✓				
Sausage		✓				
Cladophora		✓				
Lichina		✓				
Verrucaria		✓				
Ceramium		✓				

Barnacles	✓	✓				
BaL crenatus	✓	✓				
Patella (big)		26				
Patella (small)		18				

Gibbula	✓	✓				
Nucella	✓	✓				
Litt. nerit.	✓	✓				
L. (peri.)	✓	✓				
L. (edible)	✓	✓				
L. saxatilis	✓	✓				
Osolinus	✓	✓				
Onchidella	✓	✓				

Lipura	✓	✓				
Mites	✓	✓				
Anemone	✓	✓				
Spirorbis	✓	✓				
Sponge	✓	✓				

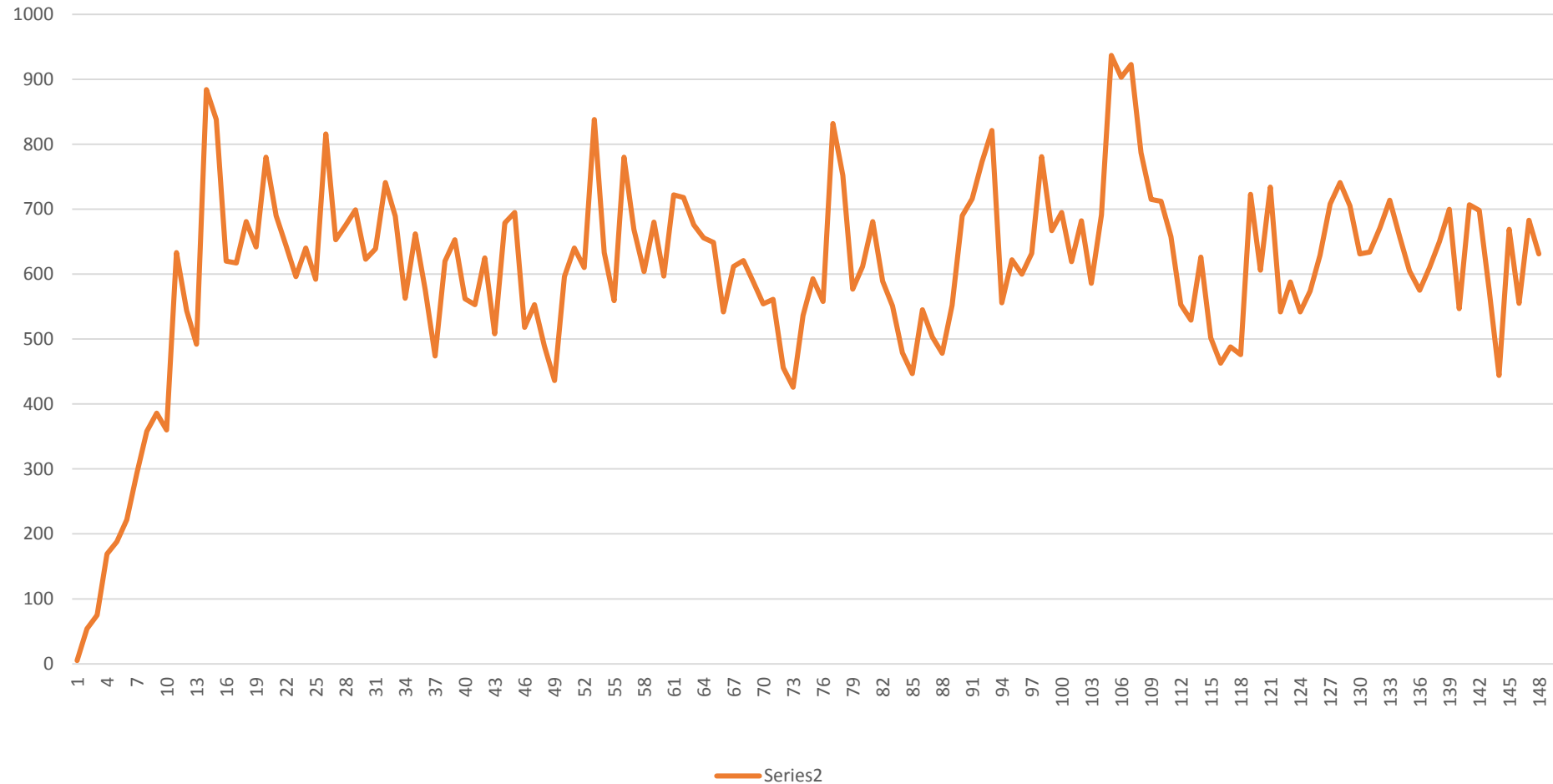
Mytilus	✓	4	✓			
---------	---	---	---	--	--	--

prawn	✓	✓				
Carcinus	✓	✓				
Gobius	✓	✓				
brown slug	✓	✓				
fly	✓	✓				

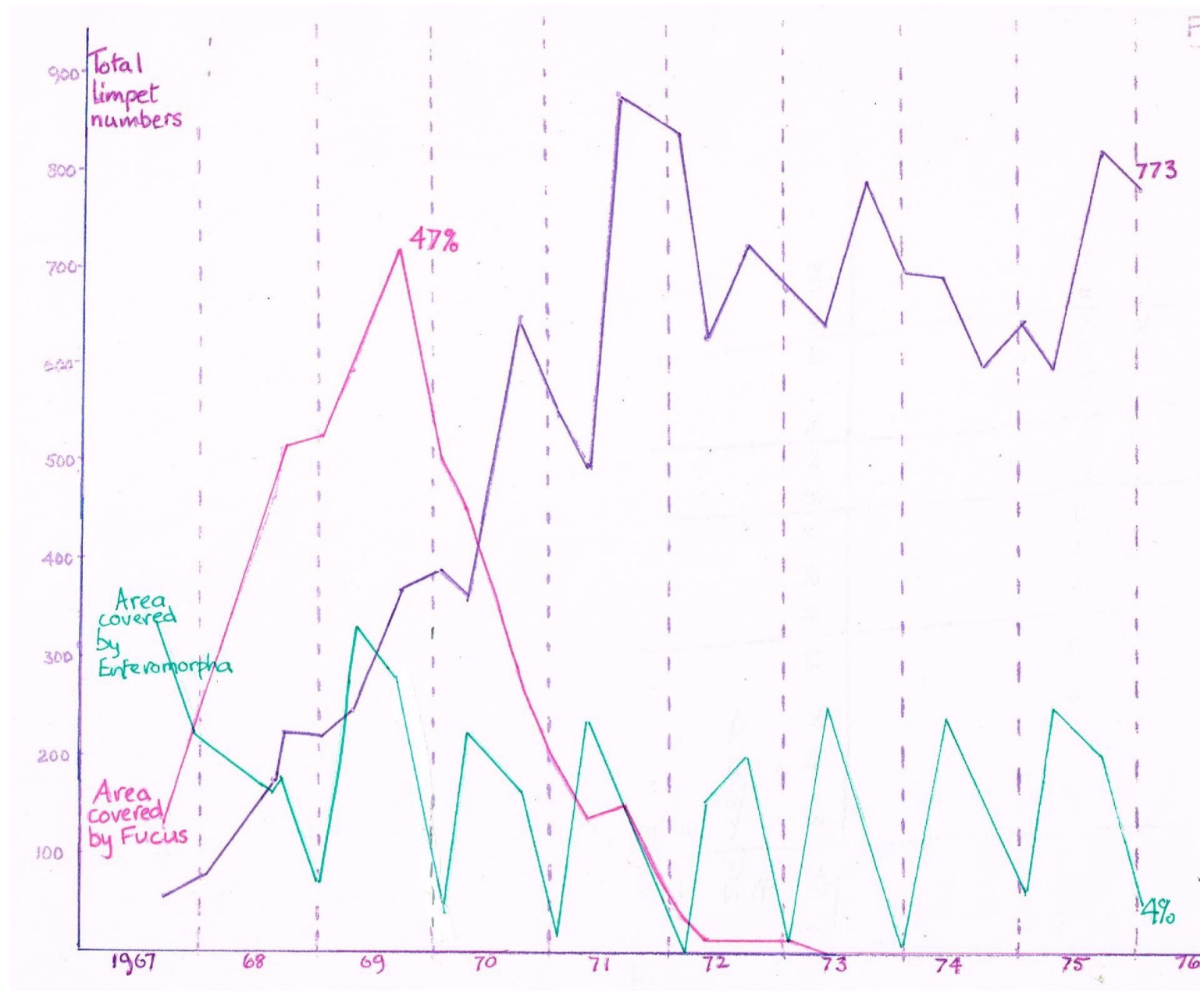
recruit
rock
falls

Population of Patella spp, 1967-2017

Patella numbers, Porthmear, 1967-2017



Early population changes

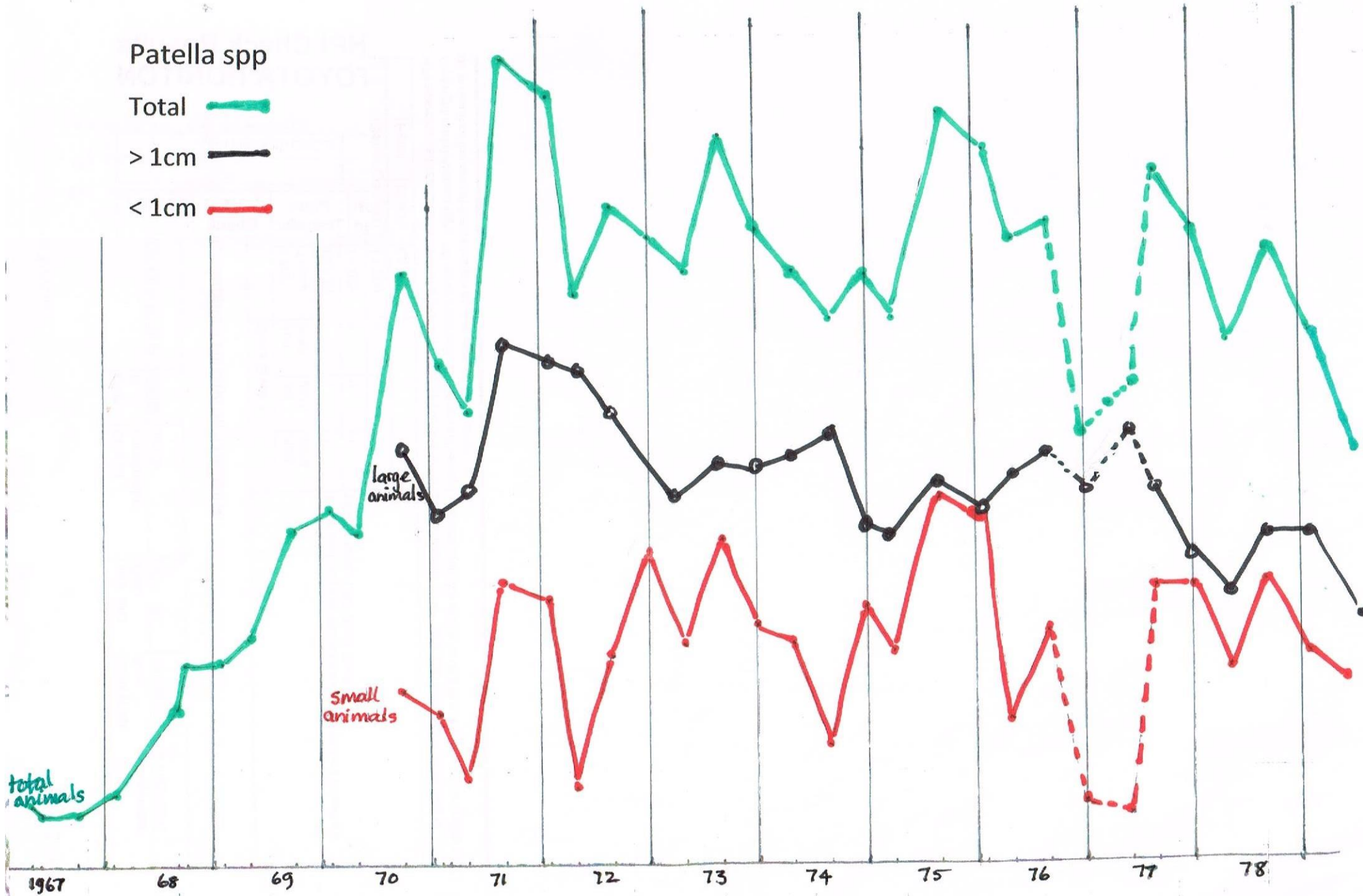


Patella spp

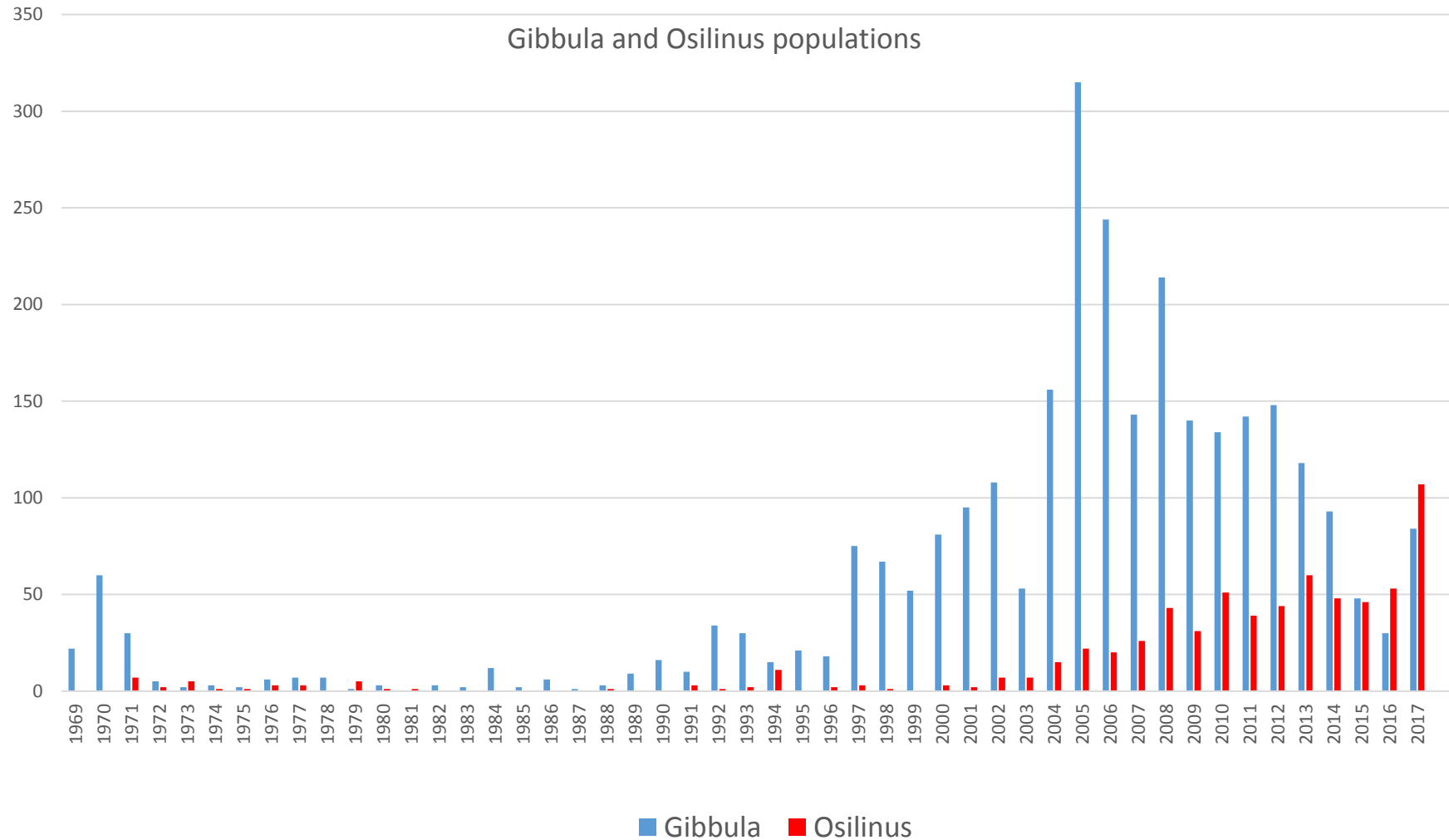
Total

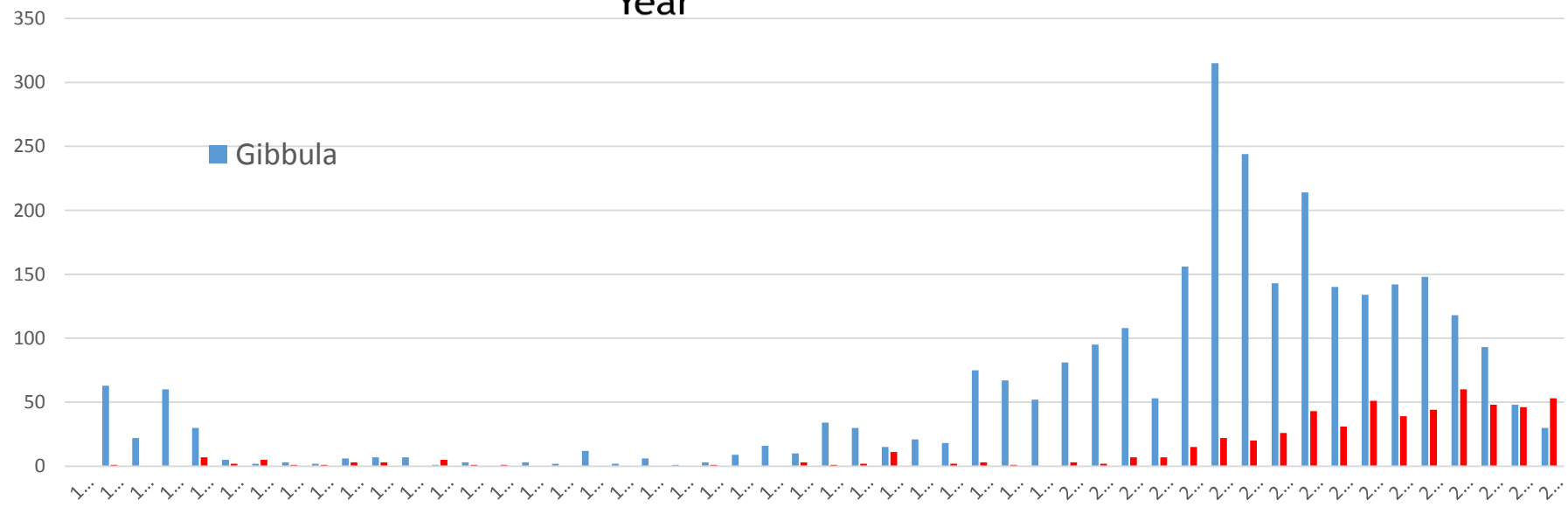
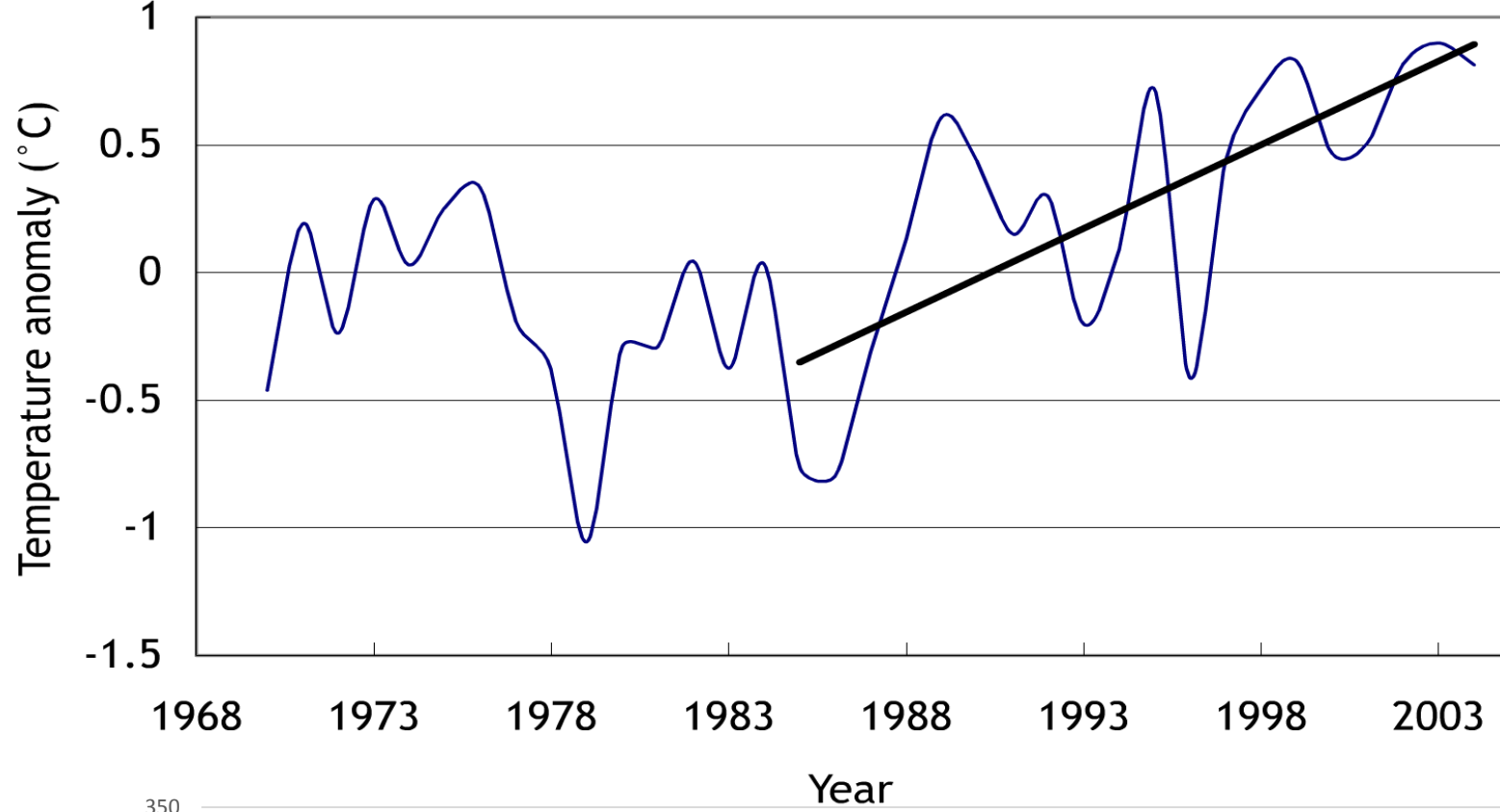
> 1cm

< 1cm



Populations of *G. umbilicalis* and *Osilinus lineatus*





Concluding questions:

Trilobite – 400 m y

Postglacial peat – 2-8,000 y

Live observations – 50 y

After 'Torrey Canyon'

- Richard Pearce

- rpearce@inted.demon.co.uk